



# Guidelines for MR Imaging of Sports Injuries

European Society of Skeletal Radiology  
Sports Sub-committee

2016



# Contributors

- Ara Kassarian, Spain
- Lars Benjamin Fritz, Germany
- P. Diana Afonso, Portugal
- Andrea Alcalá-Galiano, Spain
- María José Ereño, Spain
- Andrew Grainger, UK
- Eva Llopis, Spain
- Eugene McNally, UK
- Claudia Schüller-Weidekamm, Austria
- Reto Sutter, Switzerland

# Abbreviations and clarifications

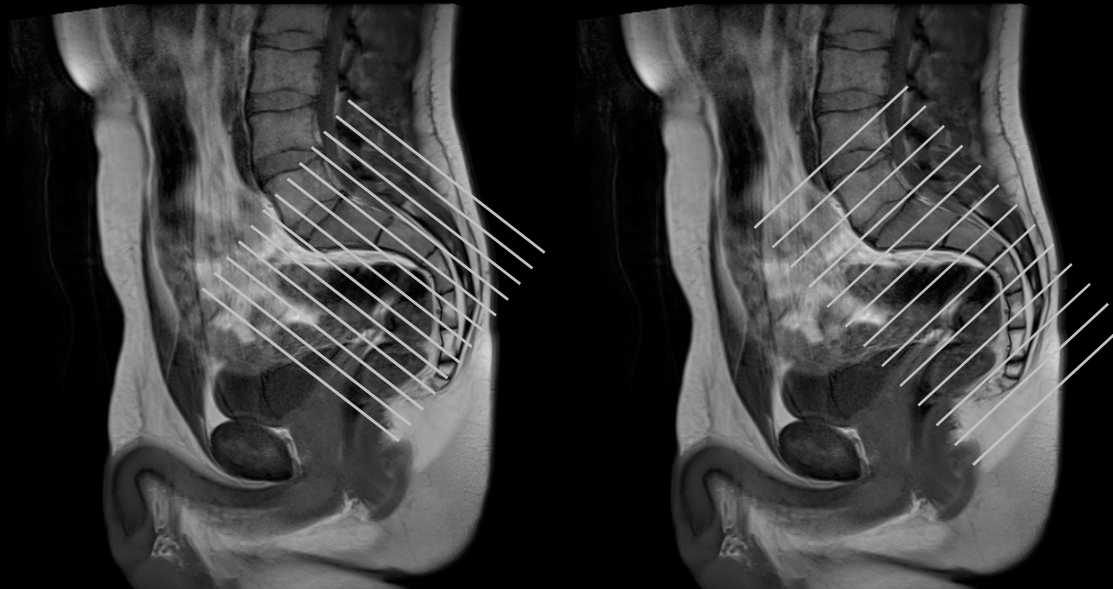


- Ax = axial
- Cor = coronal
- Sag = sagittal
- FOV = field of view
- PD = proton density
- TE = time to echo in milliseconds
- FS = fat suppressed
- Int = intermediate
- Int FS: this is a fat suppressed sequence with a long TR and a TE between that of a traditional PD (e.g. TE= 10-20) and a traditional T2 (e.g. TE=80-100). The advantage of this sequence is that the TE is short enough to maintain sufficient signal for visualisation of the anatomy (like a PD) yet long enough to be more fluid sensitive (like a T2)
- For STIR sequence, TI (inversion time) should be 140-150 at 1.5T



# SI joints / Sacrum

- Patient in supine position as straight as possible
- Coronal obliques parallel to sacral body, cover bone only
  - include L3/L4 disc space at top of FOV to bottom of coccyx
- Axial obliques 90° to oblique coronal images
  - extend from L4/L5 disc space through end of coccyx
- No contrast unless otherwise specified or if for sacroiliitis



# SI joints / Sacrum

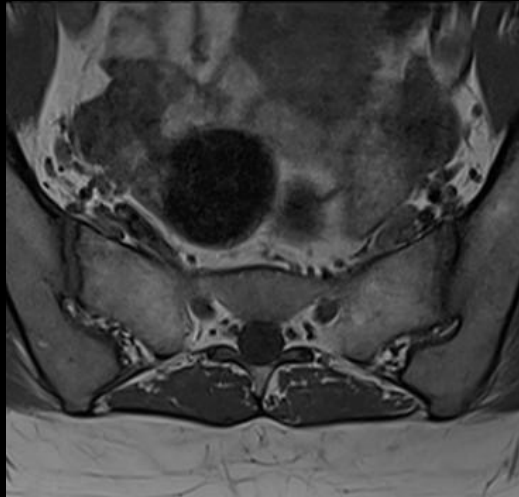


	FOV	Slice	TE	Matrix
Cor Obl T1	16 cm	3-4mm	min	320x256
Cor Obl STIR	16 cm	3-4 mm	50	256x205
Ax Obl T1	16 cm	3-4mm	min	320x256
Ax Obl T2 FS	16 cm	3-4 mm	80	256x205
Sag T1	16 cm	3-4 mm	min	320x208
Sag STIR	16 cm	3-4 mm	50	256x208
<i>optional</i> Ax Obl T1 FS	16 cm	3-4 mm	min	320x208
<i>optional</i> Ax Obl T1 FS Gd	16 cm	3-4 mm	min	320x208

# SI joints / Sacrum



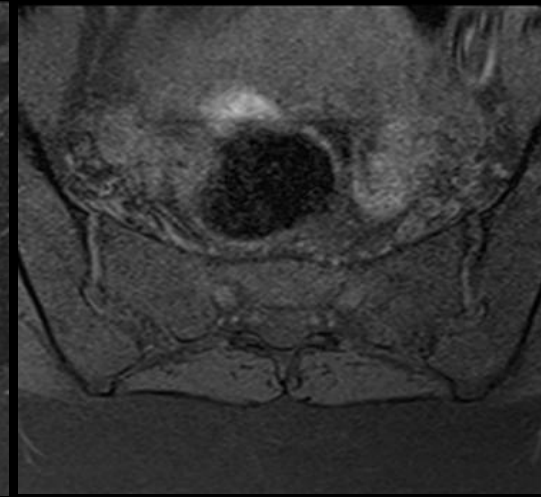
Ax Obl T1



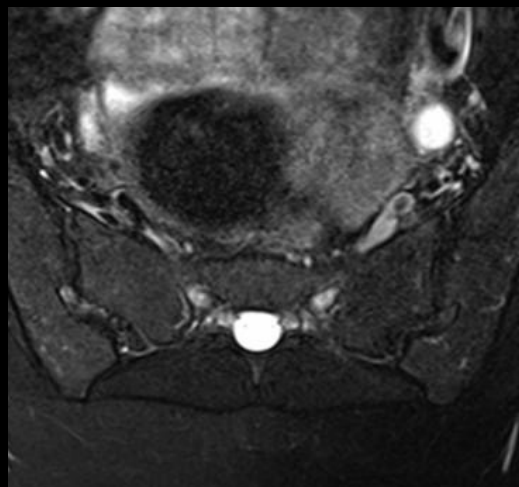
Cor Obl STIR



Axial Obl T1 FS



Ax Obl T2 FS



Cor Obl T1



Ax Obl T1 FS Gd

